



**WHEREVER
YOU NEED!**

İhtiyacınız Olan Heryerde!

www.upgate.com.tr

İhtiyacınız Olan Heryerde!
WHEREVER YOU NEED!

ABOUT US — HAKKIMIZDA

We aim to add value to our customers' business by offering innovative solutions tailored to their needs. Our journey, which we started with our 20 years of sectoral experience, continues without slowing down from 2015 to the present day with our services and solutions focused on quality, trust and innovation. Our dynamic staff, which internalize a proactive approach in line with the legislation and legal regulations, continues to sign long-lasting products that are known with quality in the sector. UPGATE quality, one of the most valuable door brands of our country, reaches many countries of the world from our factory, which has an area of 3000 square meters and uses advanced technology.

"Wherever you need it" is not only our motto but also our company policy. We aim to add value to our customers' business by offering innovative solutions tailored to their needs. As a brand based in Ankara and expanding to the world, our main goal is to gain the absolute satisfaction of all our customers. For this purpose, we are deepening our commercial ties based on trust and honesty with the service we provide with our qualified personnel and with our functional, high quality and innovative products. We know that continuous development is a necessity rather than a choice. In this direction, we closely follow all developments in our sector and move our customers forward together with ourselves. Being the pioneer of development is a big responsibility, we are experienced. Being aware of our increasing responsibility, we always continue to work for the better, and we believe that we will carry our brand to where it should be abroad with our solution partners.

20 yıllık sektörel tecrübemizle çıktığımız yolculuğumuz; kalite, güven ve inovasyon odaklı hizmet ve çözümlerimiz ile 2015 yılından günümüze hız kesmeden devam ediyor. Mevzuatlar ve yasal düzenlemeler doğrultusunda proaktif yaklaşım benimseyen dinamik kadromuz sektörde adı kalite ile anılan; uzun ömürlü ürünlere imza atmayı sürdürüyor. 3000 metre kare alana sahip, ileri teknolojinin kullanıldığı fabrikamızdan dünyanın birçok ülkesine, ülkemizin en değerli kapı markalarından biri olan UPGATE kalitesi ulaşıyor.

"İhtiyacınız olan her yerde" yalnızca mottomuz değil, aynı zamanda şirket politikamız. Müşterilerimizin ihtiyaçlarına özel inovatif çözümler sunarak işlerine değer katmayı amaçlıyoruz. Ankara merkezli ve dünyaya açılan bir marka olarak temel hedefimiz tüm müşterilerimizin mutlak memnuniyetini kazanmak. Bu amaç için nitelikli personellerimizle sunduğumuz hizmetlerde de fonksiyonel, kaliteli ve inovatif ürünlerimizle de güven ve dürüstlük temelli ticari bağlarımızı derinleştiriyoruz. Sürekli gelişim tercihten ziyade bir gereklilik, biliyoruz. Bu doğrultuda sektörümüzdeki tüm gelişmeleri yakından takip ediyor ve kendimizle birlikte müşterilerimizi ileri taşıyoruz. Gelişimin öncüsü olmak büyük sorumluluk, deneyimliyoruz. Giderek artan sorumluluğumuzun farkında olarak hep daha iyisi için çalışmaya devam ediyor, markamızı yurt dışında da olması gereken noktalara çözüm ortaklarımızla taşıyacağımıza inanıyoruz.



PASS 90 | 90 DERECE
AÇILIR KAPI MOTORU

90 DEGREE OPENING DOOR AUTOMATION



03 , 04

PASS 90 DOUBLE | 90 DERECE
AÇILIR KAPI MOTORU

90 DEGREE DOUBLE OPENING DOOR AUTOMATION



05 , 06

FOTOSELLİ KAPI
SİSTEMLERİ

PHOTOCELL DOOR SYSTEMS



07 , 08

TELESKOPIK KAPI
SİSTEMLERİ

TELESCOPIC DOOR SYSTEMS



09 , 10

UPGATE HERMETİK KAPILAR

UPGATE HERMETIC DOORS



11

90 DERECE AÇILIR
UPGATE HERMETİK KAPILAR

90 DEGREE OPENING UPGATE HERMETIC DOORS



12

UPGATE DÖNER KAPILAR

UPGATE REVOLVING DOORS



13 , 14

UPSTOR GİYOTİN

UPSTOR GUILLotine



15

UPSTOR PERGOLA

UPSTOR PERGOLA



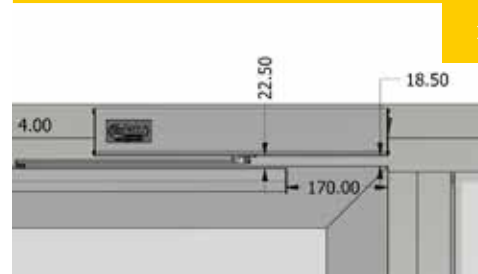
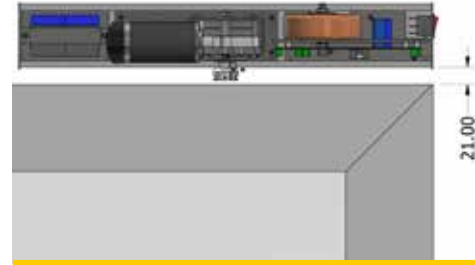
16

90 DEGREE OPENING DOOR AUTOMATION

90 degree automatic door applications are wing type circular door automations with many application areas from standard room doors to 90 degree building entrance doors. It is a high performance, continuous and convenient product that has been subjected to various tests that meet international standards and manufactured with high quality materials. Its silent working automation system and its compact structure make it easy to apply with its stylish design with stainless steel body.

SPECIFICATIONS

Power Supply	220 V 50 (60) Hz
Energy Consumption	100 W
Current	0,5 A
Engine	Magnetic Encoder 24 V DC
Ambient Temperature	-20 C - +55 C
Service Class	Continual
During Energy Failures	Manual (Push / Pull)
Capacity	110 kg (1 blade) 180kg (double blade)
MAX Speed of Opening and Closing	5sn / 90°
Protection Class	IP23
Control Panel	Optional
Electromechanical Lock	Optional
Bluetooth Module	Optional

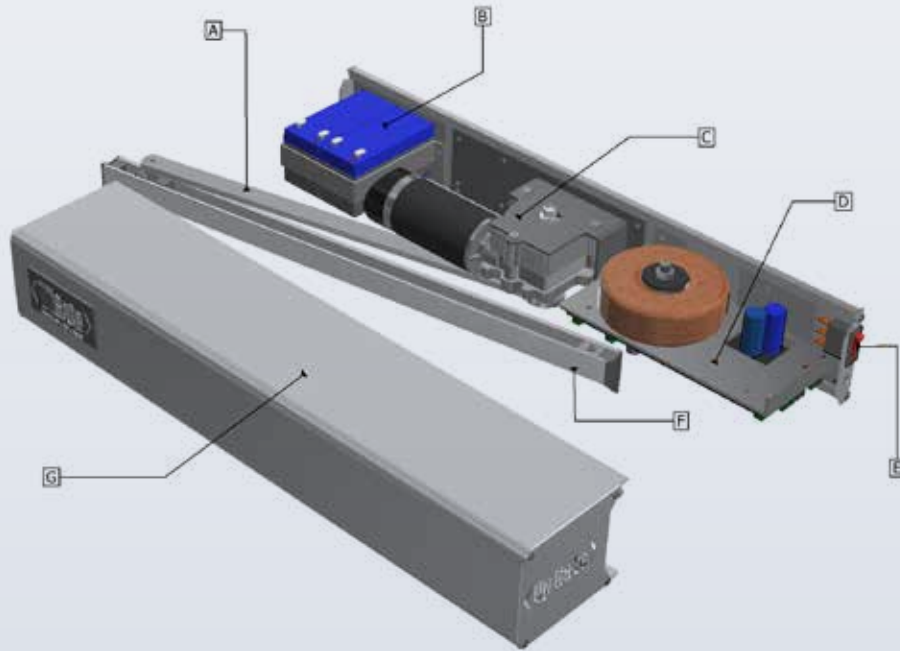


AESTHETICS

MODERN

ASSEMBLY

FUNCTIONAL



REFERENCE

Certifications › Sertifikalar

EN 16005

ISO 9001:2008

CE

GO GREEN

Opening Variances › Açılma Varyansları

- Code Panel - Şifre Paneli
- Sensor - Sensör
- Radar - Radar
- Hand Sensor - El Sensörü
- Steering - Kumanda

UPGATE

90 DEGREE DOUBLE OPENING DOOR AUTOMATION

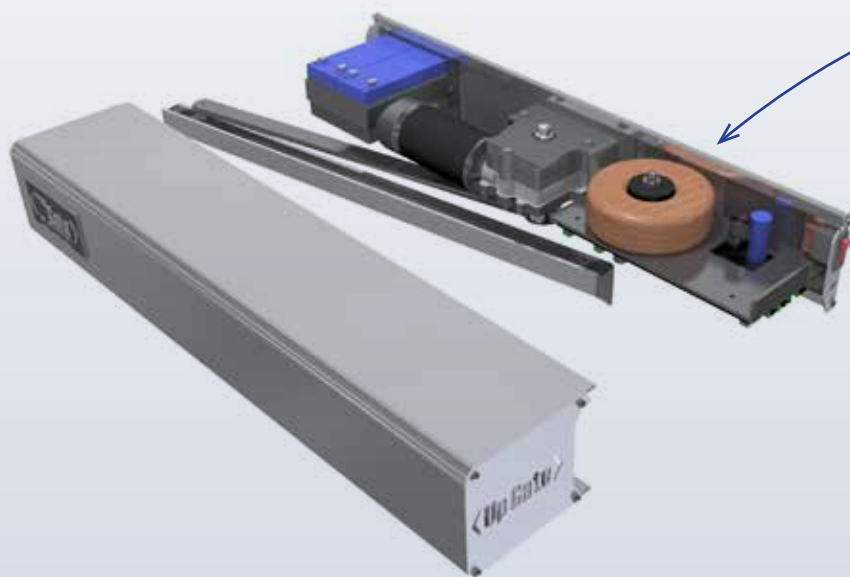
Upgate double pass 90, which is preferred for double wing doors, should be used in doors with a maximum single wing width of 1000 mm and a height of 2500 mm. (Weight 120 kg + 120 kg)

Upgate double pass 90 plus should be preferred for larger and heavier double wing doors. In this model, the maximum single wing width is 1200 mm, but it can be used in double wing doors with a maximum single wing weight up to 200 kg.

The system is based on the working of two mechanisms in coordination with each other, calculating the opening and closing speeds of active and passive wings and ensuring smooth opening and closing.

SPECIFICATIONS

Power Supply	220 V 50 (60) Hz
Energy Consumption	100 W
Current	0,5 A
Engine	Magnetic Encoder 24 V DC
Ambient Temperature	-20°C - +55°C
Service Class	Continual
During Energy Failures	Manual (Push / Pull)
Capacity	120kg + 120kg = 240kg
MAX Speed of Opening and Closing	5sn / 90°
Protection Class	IP23
Control Panel	Optional
Electromechanical Lock	Optional
Bluetooth Module	Optional



Certifications › Sertifikalar

EN 16005

ISO 9001:2008

CE

GO GREEN

Opening Variances › Açılma Varyansları

- Code Panel - Şifre Paneli
- Sensor - Sensör
- Radar - Radar
- Hand Sensor - El Sensörü
- Steering - Kumanda

UPGATE

6

PHOTOCELL DOOR SYSTEMS

4 MILLION CYCLE TEST (4 milyon çevrim testi)

BREAKOUT (ANTIPANIC OPENING)

It is the kind of door used in your structures where the entrances and exits are dense. Input-output control, pedestrian traffic should be comfortable areas; Building entrances, hospitals, stores, shopping centers, factories, businesses etc. Is often used.

SPECIFICATIONS

MODEL	F1 (Smart)	F2 (Standart)	F3 (Plus)
Navigational Method	Encoder	Encoder	Encoder
Capacity	100 kg (1 blade) - 180kg (double blade)	120 kg (1blade) - 200kg (double blade)	120 kg (1blade) - 200kg (double blade)
Power Supply	230 V-/50-60 Hz	230 V-/50-60 Hz	230 V-/50-60 Hz
Max Speed of Opening and Closing	0,6m/s (1kanat) - 1,2m/s (2kanat)	0,7m/s (1kanat) - 1,4m/s (2kanat)	0,7m/s (1kanat) - 1,4m/s (2kanat)
Operating Temperature	-20 °C / +55 °C	-20 °C / +55 °C	-20 °C / +55 °C
Protection Class	IP 23	IP 23	IP 23
Control Panel	Display	Digital Oled	Digital Oled
Antipanic Opening	*	*	Yes
Electromechanical Lock	*	*	Optional
Bluetooth Module	*	Optional	Optional
Wifi Module	*	*	Project-Specific Production

ACSESS CONTROLS SUITABLE

FOR ALL DOORS

REFERENCE



Certifications › Sertifikalar

EN 16005

ISO 9001:2008

CE

GO GREEN

TEKNİK DETAYLAR

TECHNICAL DETAILS

UPGATE

8

TELESCOPIC DOOR SYSTEMS

SPECIFICATIONS

MODEL	T1	T2
Capacity	300kg (4 wings)	200kg (2 wings)
Power Supply	229 V-/50-60 Hz	230 V-/50-60 Hz
Max Speed of Opening and Closing	1,4m/s (4 wings)	0,7m/s (2 wings)
Operating Temperature	-20 °C / +55 °C	-20 °C / +55 °
Protection Class	IP 23	IP 23
Control Panel	Digital Oled	Digital Oled
Antipanic Opening	*	*
Electromechanical Lock	Optional	Optional
Bluetooth Module	Optional	Optional
Wifi Module	*	*
Right (R)	Optional	Optional
Left (L)	Optional	Optional
Right, Left (R,L)	Optional	Optional

Usage areas are often used in places that need photocell doors, but In areas where it cannot provide the standard opening capability, it is necessary to obtain a more suitable width measurement by increasing the number of movable wings and by reducing the immobile blades where the movable blades will be collected.

In telescopic doors, the total width is 2 on one-sided wings.It produces solutions in six parts: 2 movable wings, 4 movable wings on double-sided wings and 2 fixed wings.

4000+ MILLION CYCLE TEST

(4 milyon çevrim testi)



REFERENCE



1 FIXED 2 MOVING WING



2 MOVING WING



4 MOVING WING

Certifications › Sertifikalar

EN 16005

ISO 9001:2008

CE

GO GREEN

TEKNİK DETAYLAR

TECHNICAL DETAILS

UPDATE

10

UPGATE HERMETIC DOORS



CLASS2 SEALING
CERTIFICATE

SPECIFICATIONS

Hermetic door features used in rooms where UV rays are used in areas such as x-ray rooms, external operating rooms and medical laboratories are as follows;

High level of sealing (Air and heat insulation)

It is not affected by water and homogeneous

Doors are resistant to scouring compounds such as acids, cleaners, etc.

Door panels and wings are resistant to impact and scratches

It's not losing easily its feature

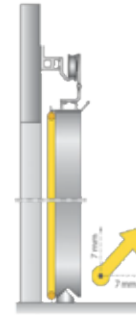
Production with optional 304 quality stainless steel for standard hermetic doors

An optional viewing window can be added. (Applicable to all models)

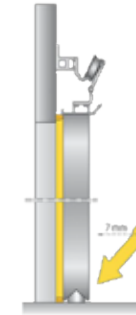
Optional compact panel production

It can be produced with lead sheet (Optionally)

Hermetic Door systems, which means leakproof door and where air insulation should be at a high level, is used in areas such as operating rooms, laboratories, x-ray rooms, cold air rooms. The sealing ratings of the environments vary and hermetic doors are produced according to such factors. The degree of tightness of the x-ray room and the cold air room is not the same. For this reason, every hermetic door requires a suitable model and production for its usage area.



OPEN
DOOR
POSITION



CLOSE
DOOR
POSITION

REFERENCE



90 DEGREE OPENING UPGATE HERMETIC DOORS

90 degree automatic door applications are wing type circular door automations with many application areas from standard room doors to 90 degree building entrance doors. It is a high performance, continuous and convenient product that has been subjected to various tests that meet international standards and manufactured with high quality materials. Its silent working automation system and its compact structure make it easy to apply with its stylish design with stainless steel body.



SPECIFICATIONS

Power Supply	220 V 50 (60) Hz
Energy Consumption	100 W
Current	0,5 A
Engine	Magnetic Encoder 24 V DC
Ambient Temperature	-20°C - +55°C
Service Class	Continual
During Energy Failures	Manual (Push / Pull)
Capacity	110 kg (1 blade) - 180kg (double blade)
MAX Speed of Opening and Closing	5sn / 90°
Protection Class	IP23
Control Panel	Optional
Electromechanical Lock	Optional
Bluetooth Module	Optional



REFERENCE

Certifications › Sertifikalar

EN 16005

ISO 9001:2008

CE

GO GREEN

Opening Variances › Açılma Varyansları

- Code Panel - Şifre Paneli
- Sensor - Sensör
- Radar - Radar
- Hand Sensor - El Sensörü
- Steering - Kumanda

UPGATE D REVOLVING DOOR

ISO 9001:2008

CE

REFERENCE



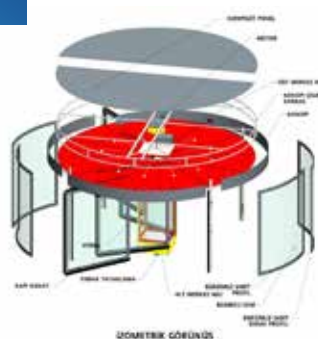
SPECIFICATIONS

MODEL	Update DS	Update DV	Update DC
Wide Passages	Entirely Proportionate	Entirely Proportionate	Entirely Proportionate
Air Sealing	Partial Suitable	Partial Suitable	Partial Suitable
Number of Blades ^{3/4}	Number of Wings ^{3/4}	Number of Wings ^{3/4}	Number of Wings ^{3/4}
Emergency Exit and Emergency Escape Route	Optional	Optional	Optional
Outer Diameter (min-max)	2000 - 4200 mm	3000 - 6000 mm	2000 - 3000 mm
Transition Height (min-max)	2100 - 4000 mm	2100 - 4000 mm	2100 - 4000 mm
Kanopi Height (min-max)	200 - 1000 mm	200 - 1000 mm	75 mm
WORKING SCHEDULE			
Locked	Standard	Standard	Standard
Automatic-Continuous Freezing	Standard	Standard	Standard
Freezing with Auto-Sensor	Standard	Standard	Standard
Disabled Pass Button	Standard	Standard	Standard
Emergency Stop Button	Standard	Standard	Standard
SURFACE COATING			
Natural Eloksal	Standard	Standard	Standard
Special Anodized	Optional	Optional	Optional
RAL Colors	Optional	Optional	Optional
Stainless Coating	Optional	Optional	Optional

UPGATE DS



UPGATE DV



UPGATE DC





Moving Handrail/Glass Guillotine usage areas, cafeteria, restaurants and residences. The system does not take in air and water. Isolation is provided. The system provides motion by means of the receiver and command control.



ISO 9001:2008

CE

UPGATE BRAND



Pergola awning systems are specially produced with a design and fabric which are suitable for space and the request. Pergola awnings are produced in water and snow-proof structure with their long-lasting structure.

Thanks to the pergola awning system, horizontal, twisted, and roof-shaped gaps can be closed with awnings.

It is an awning system that enables it to be opened and closed with the help of the installed sensor, motor, and control. The automatic awning is an awning system that can be used with all awning models except fixed awning.



İhtiyaciniz Olan Heryerde!

WHEREVER YOU NEED!



UPGATE DOOR
CA OTOMASYON LTD. ŞTİ

www.upgate.com.tr



PTT Evleri District Bostancık Street. Nu:7/1
Mamak/Ankara- TURKEY

Phone : +90 312 351 0 464

Fax : +90 312 351 0 465

E-mail : export@upgatedoor.com